



INSTALLATION GUIDE AB8/AB6 AuxBeam Control Mount for 2020+ Outback and Legacy

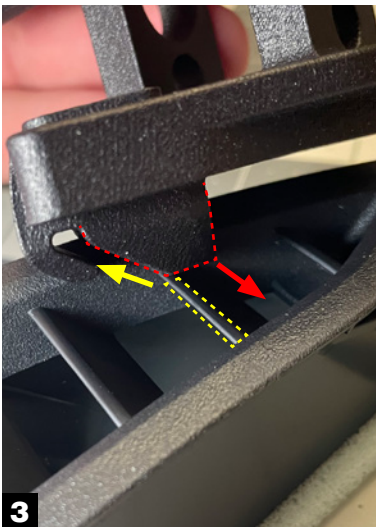
Installing your AB8 or AB6 AuxBeam controller mount is detailed below and takes about 15-20 minutes.



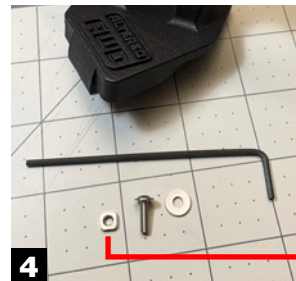
1 Carefully use an interior panel removal kit, a small flathead screwdriver, or a knife to insert in this area of the vent nozzle and dashboard. Gently pry up the vent nozzle and it will release from the dashboard.



2 Using 4 screws that came with your AuxBeam controller, install it on the AB8/AB6 mount. Please note the cable routing for the controller, that goes through the mount.



3 Place your AB8/AB6 mount on the vent nozzle as shown above, sliding the defroster vent fin (in yellow above) into the slot of the mount.



With the mount in place, turn everything upside down and take the supplied square nut and insert it into the small rectangular slot. Next, use the included hex wrench to fasten the screw and washer into the captured square nut, through the opening in the vent. Reinstall the vent nozzle with the new mount back into the dashboard to complete the installation.